

# Rush Engineering, Inc.



[\\*Active Links\\*](#)



[\\*Contact Rush Engineering, Inc.\\*](#)



[\\*Active Links\\*](#)

**Rush Equipment Analysis, Inc.** provides mechanical testing services related to all forms of vibration and dynamics evaluations, including **machinery vibration**, **construction equipment ground vibration**, and **stress measurements** due to ambient and human environments.

**Rush Engineering, Inc.** has been providing engineering consulting services for general industry in the fields of **electrical**, **mechanical**, and **control systems** engineering since 1983.

**Rush E. Allen**, the principal engineer, is a registered professional engineer in these fields in the State of California U.S.A. and a Certified Machinery Vibration Analyst with the Vibration Institute.



*Vibration Institute*  
certifies that  
**Rush E. Allen**

has successfully completed the requirements for  
**VIBRATION ANALYST: CATEGORY III**

*in accordance with the requirements stated in ISO 18436-2 Vibration Condition Monitoring and Diagnostics*



**\*Introduction: VFD Equipment Service Vibration Compliance Certification\***

- \*CASE I: Deep Set VTP- Pump Station Weakness\***
- \*CASE II: Vertical Non-Clog Pump Lateral Resonance\***
- \*CASE III: Submersible Pump Dry Pit Lateral Resonance\***
- \*CASE IV: Vertical Can Pump System Resonance\***
- \*CASE V: Vertical Can Pump Oil Whip Excitation\***
- \*CASE VII: Tall Motor Stand VTP Test Procedures\***

## **Engineering Services --- Equipment Analysis**

- |  |     |  |
|--|-----|--|
| <a href="#">*Field Testing Instrumentation Examples*</a> | --- | <a href="#">*Ground Vibration Analysis Procedures*</a> |
| <a href="#">*Electrical/Mechanical Engineering*</a>      | --- | <a href="#">*Electrical Performance Certification*</a> |
| <a href="#">*Dynamics Testing and Analysis*</a>          | --- | <a href="#">*Machinery Vibration Analysis*</a>         |
| <a href="#">*Structural Testing and Analysis*</a>        | --- | <a href="#">*Acoustic Testing &amp; Analysis*</a>      |
| <a href="#">*Finite Element Modeling*</a>                | --- | <a href="#">*Power Harmonics Analysis*</a>             |

These services are provided at REI offices and at client field locations throughout the world. Ninety percent are performed in the **Southern California** area.

**43430 East Florida Ave, #F331  
Hemet, CA 92544-7210  
Ph: 951-927-1316**

[\\*email & web Rush@RushEngineering.com\\*](mailto:Rush@RushEngineering.com)

# Rush Equipment Analysis, Inc.



[\\*Active Links\\*](#)

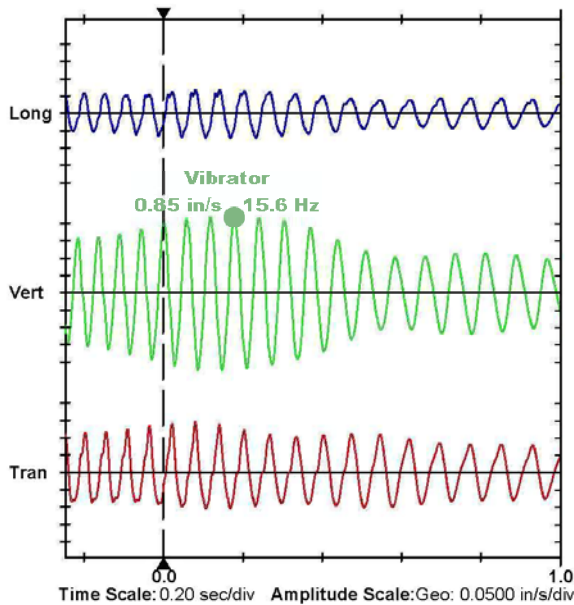


[\\*Contact Rush Engineering, Inc.\\*](#)

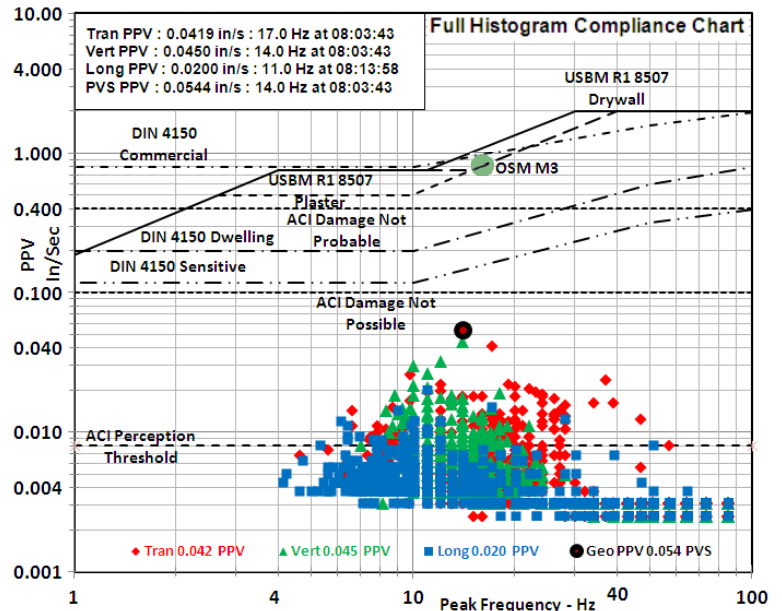


[\\*Active Links\\*](#)

**Rush Equipment Analysis, Inc.** provides mechanical testing services related to all forms of construction equipment ground vibration monitoring and certification.



**Vibration Monitoring**



**Vibration Certification**

**Rush E. Allen**, the principal engineer, is a professional engineer in the State of California and a Certified Machinery Vibration Analyst with the Vibration Institute.

**Vibration Institute**  
 certifies that  
**Rush E. Allen**  
 has successfully completed the requirements for  
**VIBRATION ANALYST: CATEGORY III**  
 in accordance with the requirements stated in ISO 18436-2 Vibration Condition Monitoring and Diagnostics

REGISTERED PROFESSIONAL ENGINEER  
 RUSH E. ALLEN  
 NO. 0001751  
 EXP. 12/31/09  
 MECHANICAL  
 STATE OF CALIFORNIA

**Ph: 714-998-7433**

[\\*email & web Rush@RushEngineering.com\\*](mailto:Rush@RushEngineering.com)

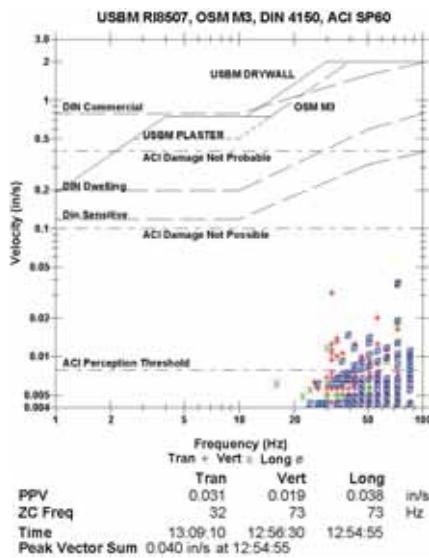


Typical Dual DC On-site Seismic Installation

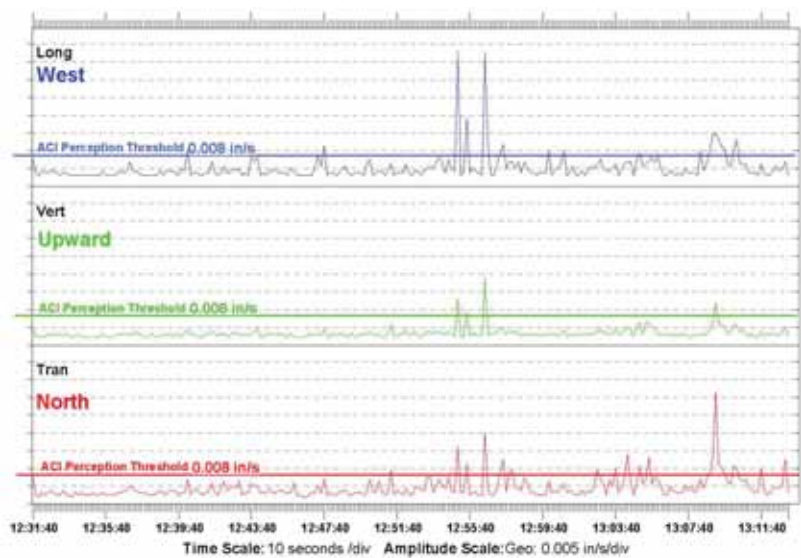


Typical AC Modem On-site Seismic Installation

## Modem Installations for Automatic Reporting of Seismic Events



Histogram Start Time 12:31:30



Histogram Finish Time 13:13:08

Compact AC Modem On-site Seismic Installation

Lock Box Solar Modem On-site Seismic Installations

